



308 Curlew House, London, E14 0YA

£425 Per week





Furnished | Available

A beautiful contemporary, one-bedroom apartment in the sought-after Poplar Riverside development by Berkeley Group! The property comprises, 482sq.ft of living space, modern open plan kitchen and living area, luxury bathroom, great storage, double bedroom and boasts a 64sq.ft balcony.

\*Photos of bedroom have been digitally dressed for marketing purposes.

Located in Zone 2, on the banks of the River Lea just 1.7 miles from Canary Wharf.

On foot, within 0.5 miles, 4 DLR stations - Langdon Park, East India, All Saints and Canning Town DLR/ Underground station. By bike, Canary Wharf can be reached in 12 minutes and Stratford in 16 minutes

Council Tax Band: Tower Hamlets - D

Minimum contract: 12 months

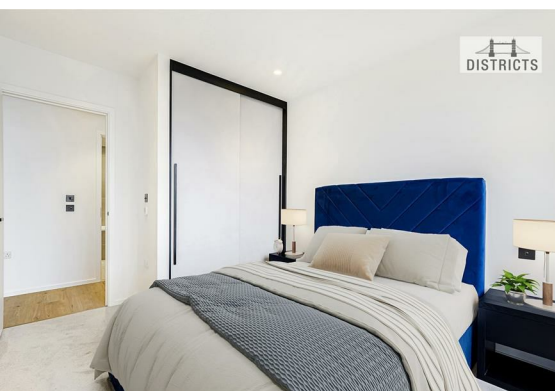
Change of contract fee: £50 including VAT  
Lift access | Cladding: EWS1 Certificate available

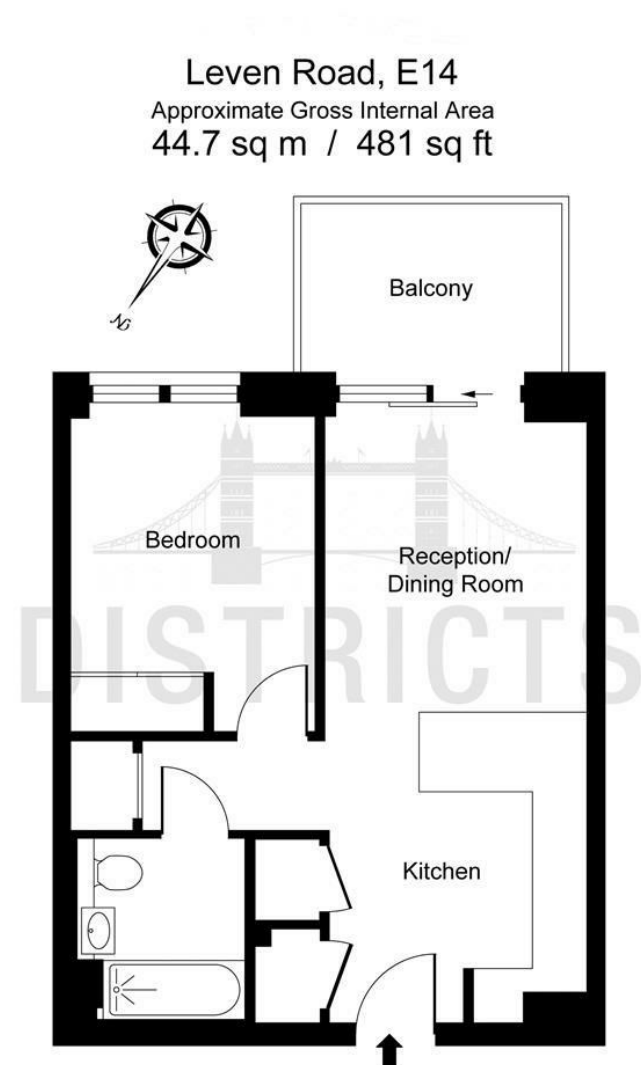
Holding Deposit - £425 (1 weeks rent, subject to agreed offer)

Electricity supply – Mains | Cold Water supply – Mains | Sewerage – Mains | Hot water, heating & comfort cooling – Mains | Internet: Fibre | Parking no | Lift Access  
To check broadband and mobile phone coverage please visit Ofcom.









Leven Road, E14  
Approximate Gross Internal Area  
44.7 sq m / 481 sq ft

ILLUSTRATION FOR IDENTIFICATION PURPOSES ONLY  
ALL MEASUREMENTS AND AREA FIGURES SUPPLIED BY OTHERS, ACCURACY IS NOT GUARANTEED.  
THIS PLAN MUST NOT BE REPRODUCED BY ANY OTHER PERSON WITHOUT PERMISSION

| Energy Efficiency Rating                    |         |                         |
|---|---------|-------------------------|
|   | Current | Potential               |
| Very energy efficient - lower running costs |         |                         |
| (92 plus) A                                 | 84      | 84                      |
| (81-91) B                                   |         |                         |
| (69-80) C                                   |         |                         |
| (55-68) D                                   |         |                         |
| (39-54) E                                   |         |                         |
| (21-38) F                                   |         |                         |
| (1-20) G                                    |         |                         |
| Not energy efficient - higher running costs |         |                         |
| England & Wales                             |         | EU Directive 2002/91/EC |

These particulars, whilst believed to be accurate are set out as a general outline only for guidance and do not constitute any part of an offer or contract. Intending purchasers should not rely on them as statements of representation of fact, but must satisfy themselves by inspection or otherwise as to their accuracy. No person in this firms employment has the authority to make or give any representation or warranty in respect of the property.